



THE THOMSON  
DUPLEX

EXPERIENCE ELEVATED LIVING



323B THOMSON ROAD

## SIX EXCLUSIVE UNITS

EXCLUSIVE • EXTRAORDINARY • ELEVATED

JUST 10 MINS AWAY FROM TOWN

YET TUCKED AWAY IN PRIVATE SERENITY

FREEHOLD

## IT STARTS WITH A VISION

A vision empowered by ideals. We all aspire towards progress, and progress drives us in our search for that most elusive prize of all - a life of fulfillment. It is this pursuit that makes our lives truly rich.

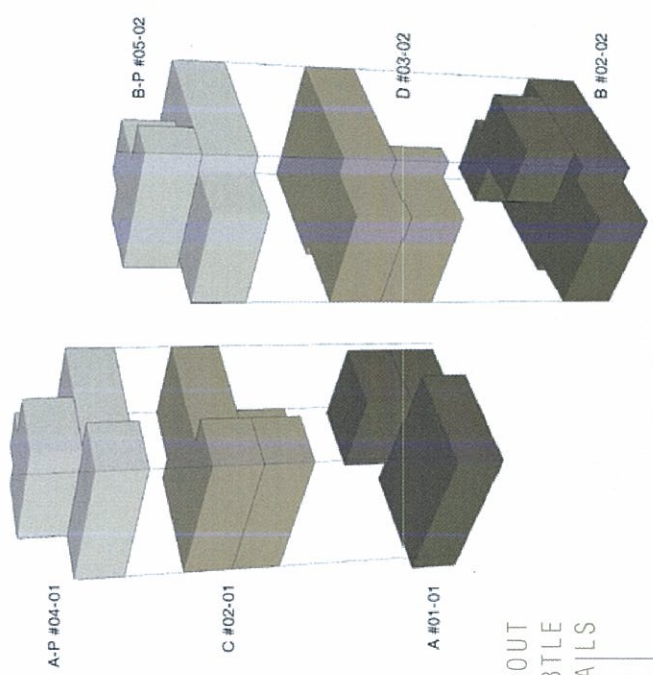


ARTIST'S IMPRESSION ONLY



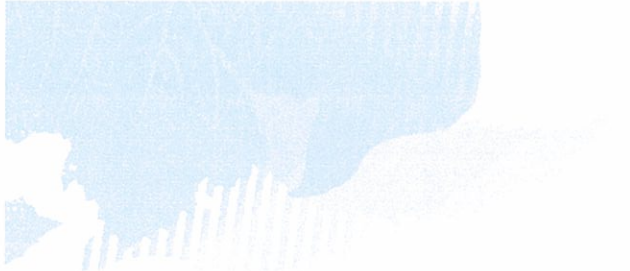


ARTIST'S IMPRESSION ONLY



IT'S ABOUT  
THE SUBTLE  
DETAILS

Interlocking units. Interactive spaces. Six individually unique habitats for the discerning individual. Sublime design. Exceptional craftsmanship. Floor to ceiling windows that offer new perspectives. It is the nuances you uncover that make each day a fresh discovery.



ALL IMAGES ARE ARTIST'S IMPRESSION ONLY

## IT'S ABOUT MEANINGFUL SPACES

Spaces where people can interact with each other and their environment. Where the relationship between habitat design and spatial utility deepens the connection between you and your loved ones. A poetry of space. A space that evolves with you everyday.



# IT'S EVERYTHING YOU WANT IT TO BE

Because your life isn't static. One moment you are here and another you are there. We all lead many lives. Work-life, Home-life. The high-life. Find your centre right here at the Thomson Duplex.

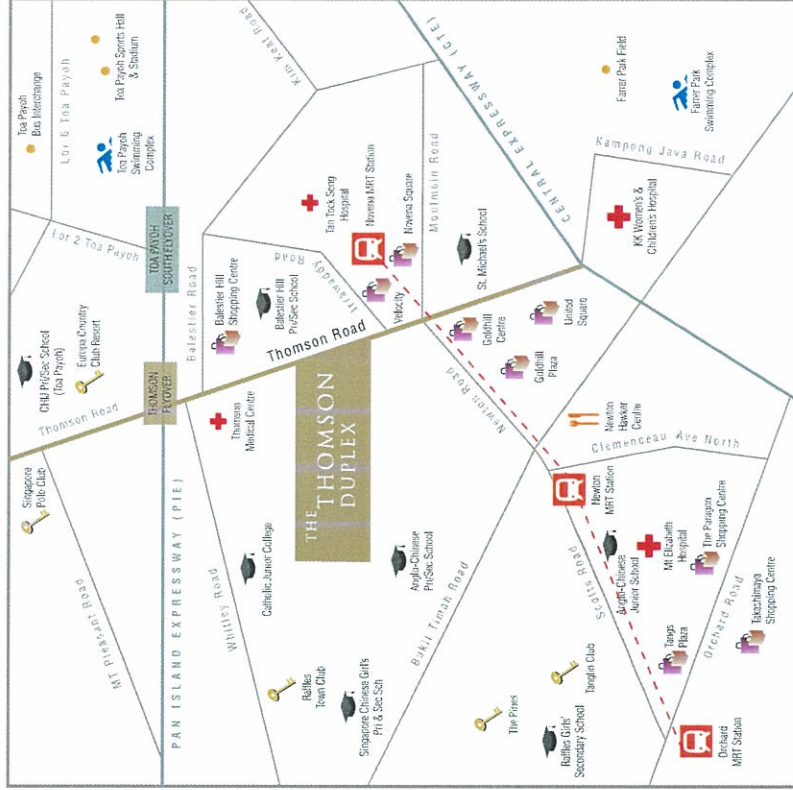




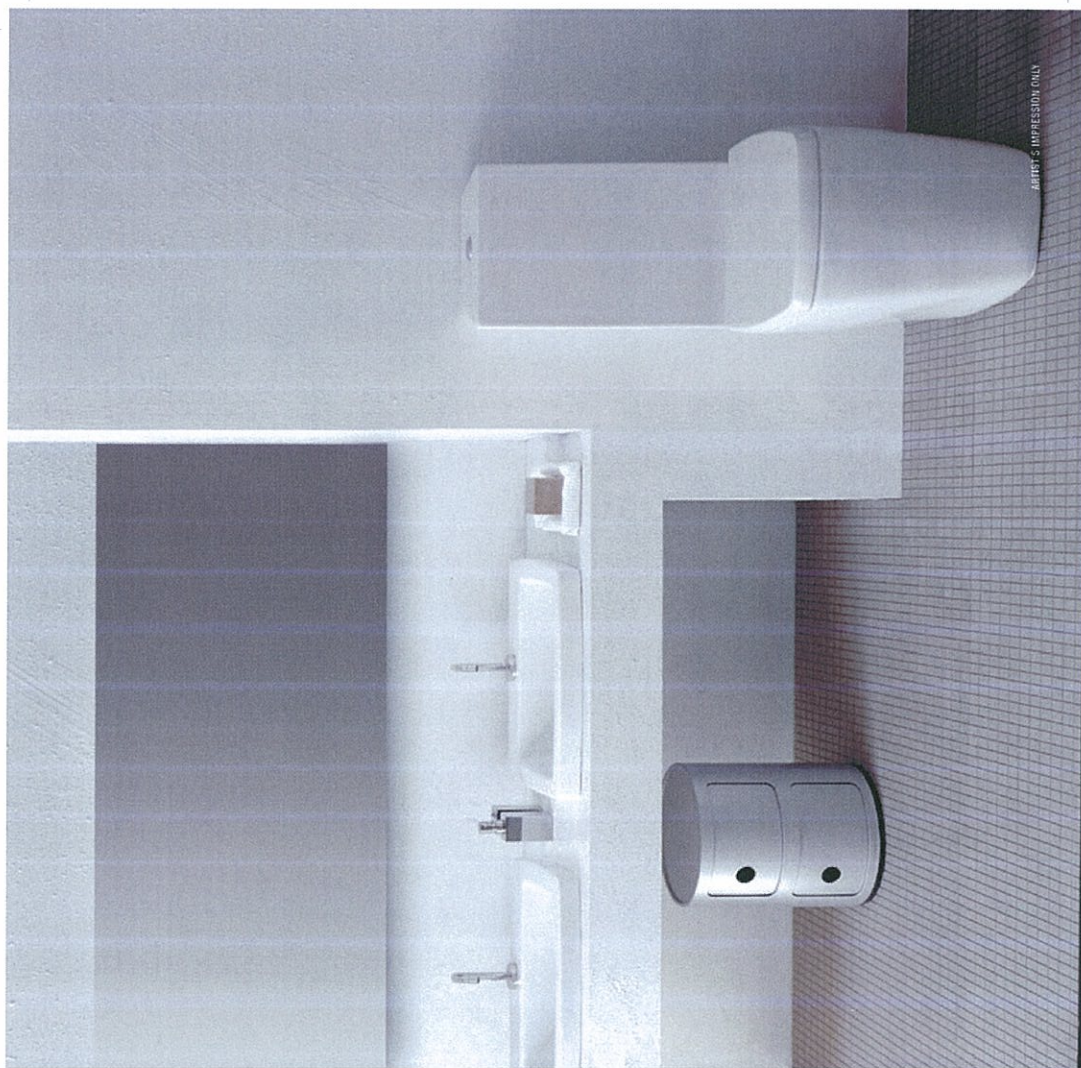
PHOTO: J. BARRON FOR ENVI

## IN-BUILT FIXTURE BEDROOMS

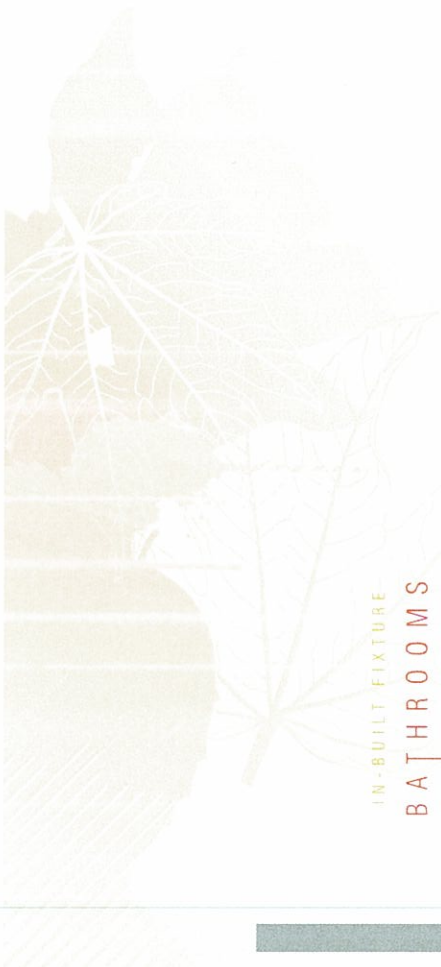
Welcoming, comfortable and built with designer closet space. Whether you are staking claim to it solo or sharing it with someone special, this cozy bedroom will make you want to curl up in bed and wish you never had to leave home.







ARTIST'S IMPRESSION ONLY



IN-BUILT FIXTURE  
**BATHROOMS**

Retreat into the serenity of clean lines. Appreciate the attention to detail with stainless steel fixtures and admire the meticulous touches of subtle design. Take refuge in this stylish bathroom. Make it your private sanctuary.



www.damixa.com

# SECURITY

## IN-BUILT FIXTURE SECURITY

Marvel at the conveniences of modern living. Access to your apartment is now **safe, simple and secure** with the Biometric security system, which uses your unique fingerprint identification to ensure the safety of your home.







FACILITIES

RECREATIONAL

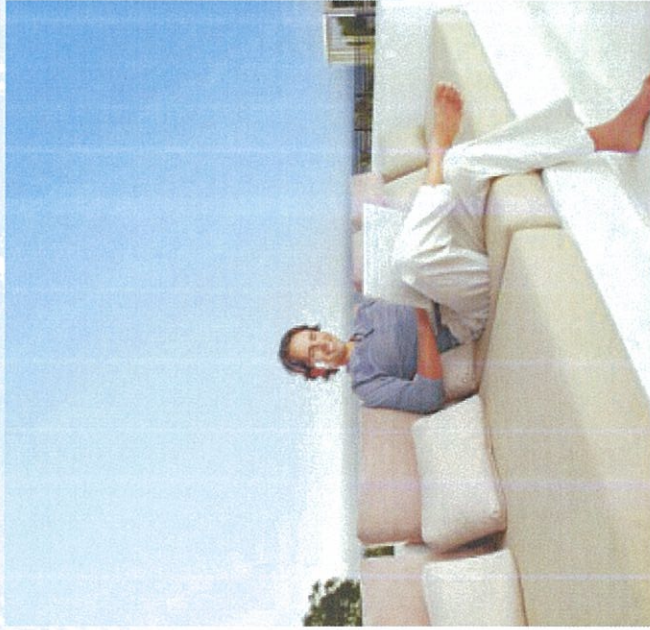
Work out in the gym and take a splash in the pool. With only 6 units to share between, you can experience these facilities in the privacy of this exclusive community.





## SOMETHING SPECIAL FOR EVERYONE

Residents of The Thomson Duplex can expect nothing short of luxury. With 6 exceptional units housing their own distinctive features, be it a roof garden, floor to ceiling windows or a personal outdoor pool, taste the liberty of choosing the attribute that benefits your personality.





WHEN ALL THE THINGS  
YOU ONCE IMAGINED  
NOW BELONG TO YOU

Ingenious architecture coupled with thoughtful spaces and exclusive facilities - all coming together in one elegant expression. Where your environment becomes an extension of yourself. That is life at The Thomson Duplex.



ARTIST'S IMPRESSION © 2011





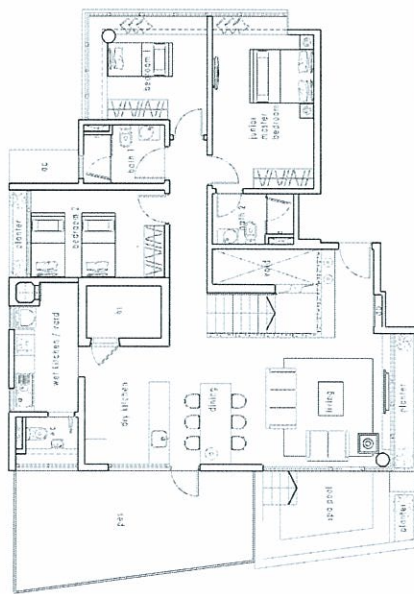
FACILITIES  
SITE PLAN

- 1 ENTRANCE
- 2 COMMON AREA
- 3 PRIVATE POOL
- 4 COMMUNAL POOL
- 5 WATER FEATURE
- 6 PRIVATE ENCLOSED SPACE
- 7 PRIVATE ROOF GARDEN
- 8 LANDSCAPE GARDEN

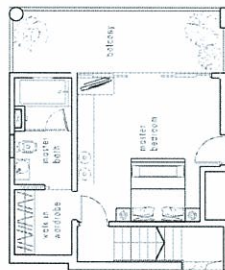




**FLOORPLAN TYPE A**  
**4 Bedrooms**  
 UNIT #01-01

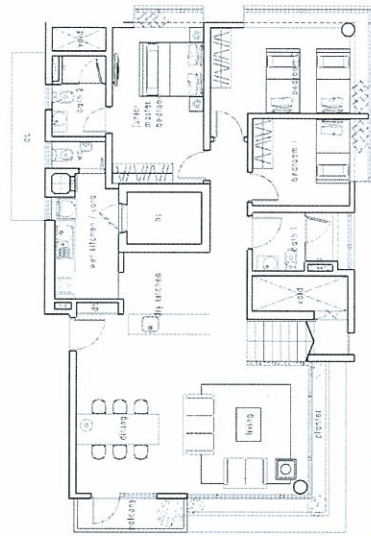


lower storey

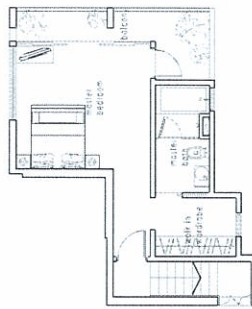


upper storey

**FLOORPLAN TYPE B**  
**4 Bedrooms**  
 UNIT #02-02



lower storey

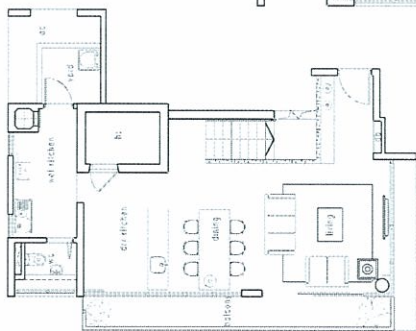


upper storey

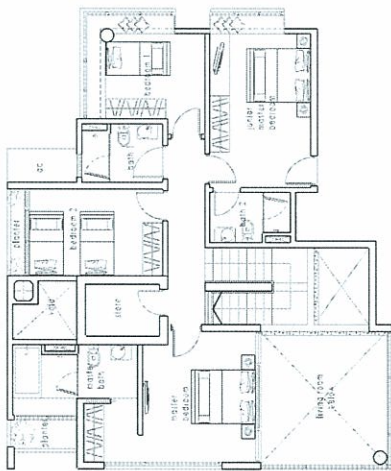
Approx. Area: 2250 sqft

Approx. Area: 1905 sqft

**FLOORPLAN TYPE C**  
 4 Bedrooms  
 UNIT #02-01



lower storey

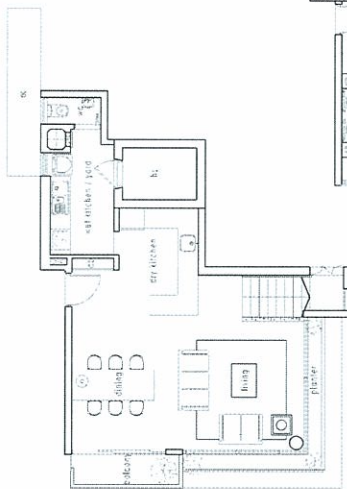


upper storey

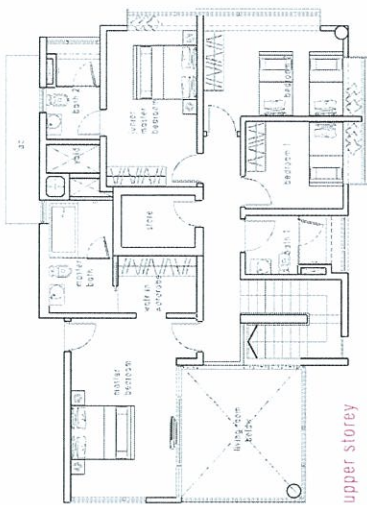


Approx. Area 2131 sqft

**FLOORPLAN TYPE D**  
 4 Bedrooms  
 UNIT #03-02



lower storey

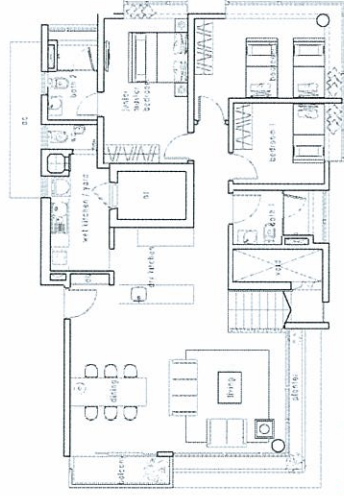


upper storey



Approx. Area 2098 sqft

FLOORPLAN TYPE B-P  
4 Bedrooms  
UNIT #05-02



lower storey

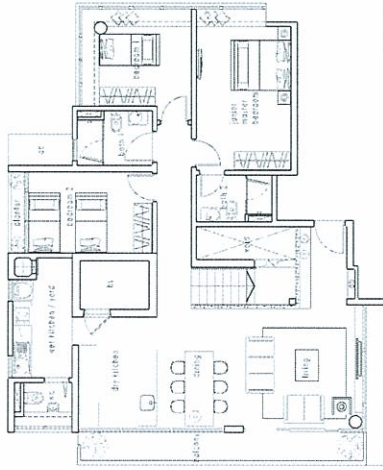


upper storey

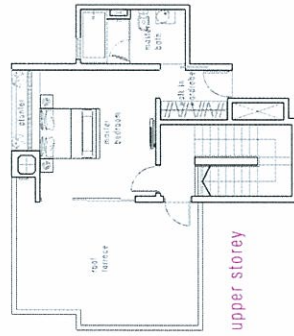


Approx. Area: 2142 sqft

FLOORPLAN TYPE A-P  
4 Bedrooms  
UNIT #04-01



lower storey



upper storey



Approx. Area: 2131 sqft



